



Sigmaplot 16

Installation Guide

Ver 1.0

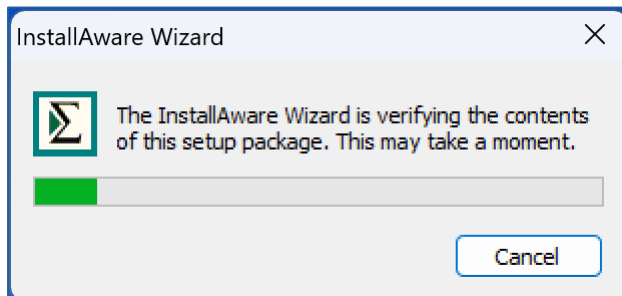
SigmaPlot 16 Installation

Installation notes:

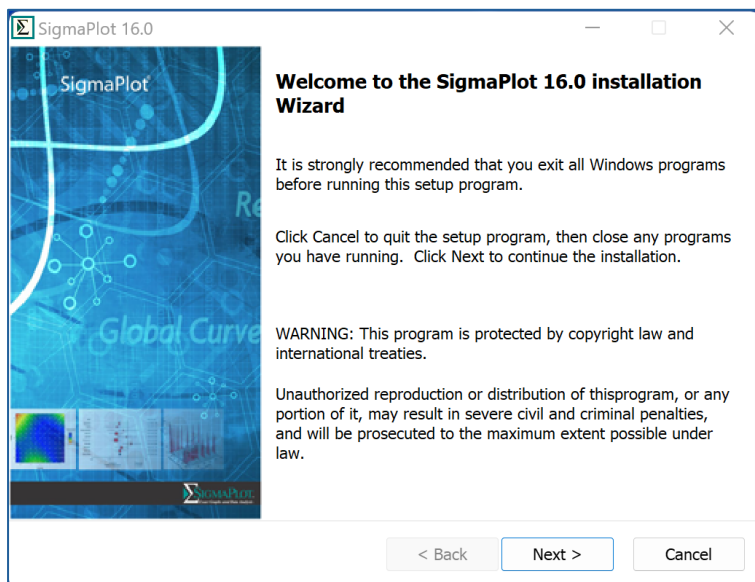
- Please close Excel before installing SigmaPlot.
- To register various components, SigmaPlot needs to be run at least once as an administrator. After installation, if SigmaPlot is open, close it. Then, right-click on the SigmaPlot desktop icon and select “Run as administrator.” You can also install SigmaPlot using “Run as administrator” to handle any permission-related issues

Start Installation:

Running SigmaPlot installation (**SigmaPlotInstaller.exe**) executable should bring progress windows one after another. It may take a little while bringing up the installation dialogs as follows since SigmaPlot is verifying the contents and or downloading/installing components.

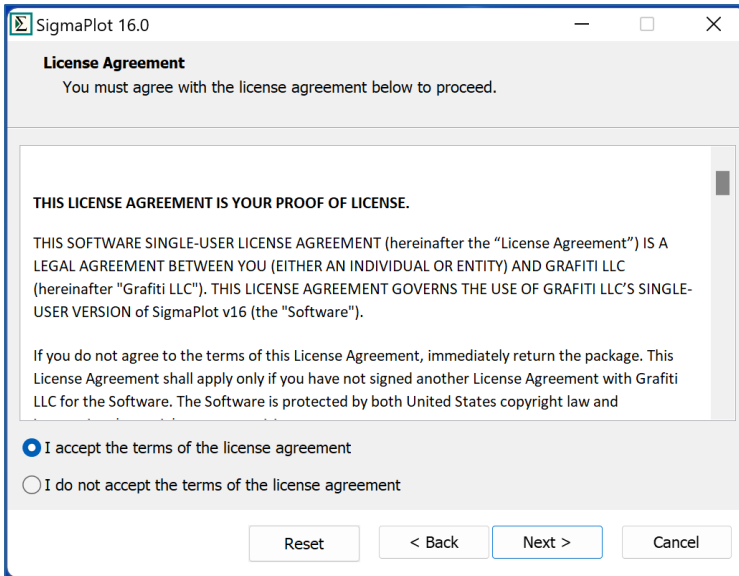


To start the installation, press Next button:



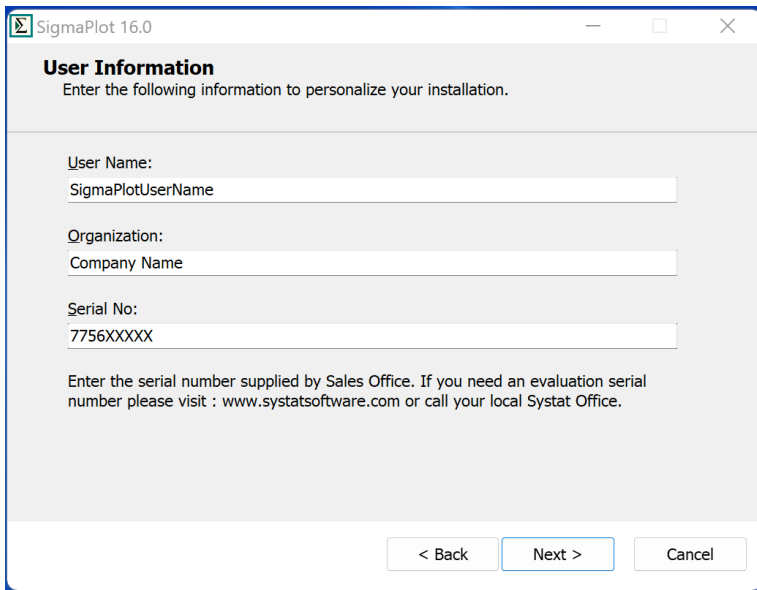
To continue the installation, press Next button:

Select the appropriate radio button in the dialog



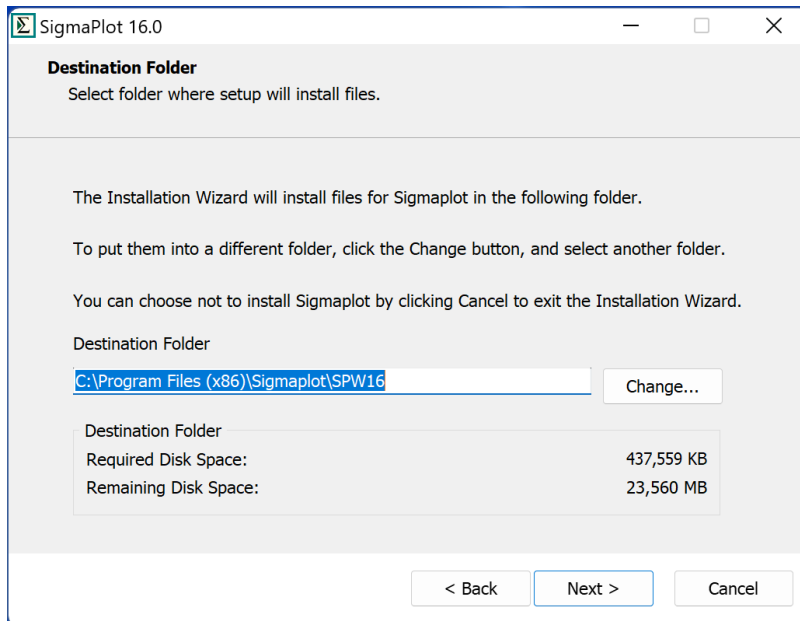
To continue the installation, press Next button:

Please enter username, company/organization name, and serial number (Will be supplied after your purchase, by the sales team/channel).



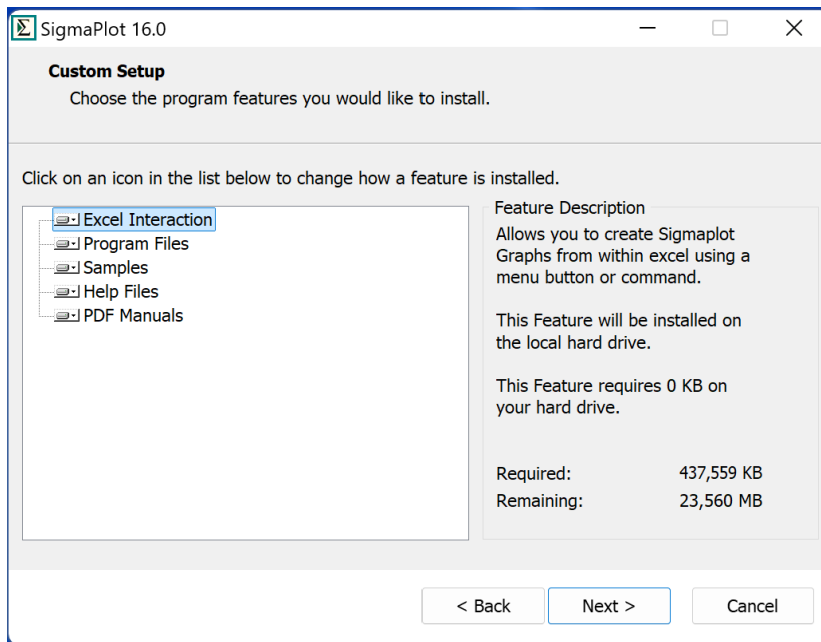
To continue the installation, press Next button:

SigmaPlot dialog shows the path to the default installation location, this path can be changed if you want to install in different location.



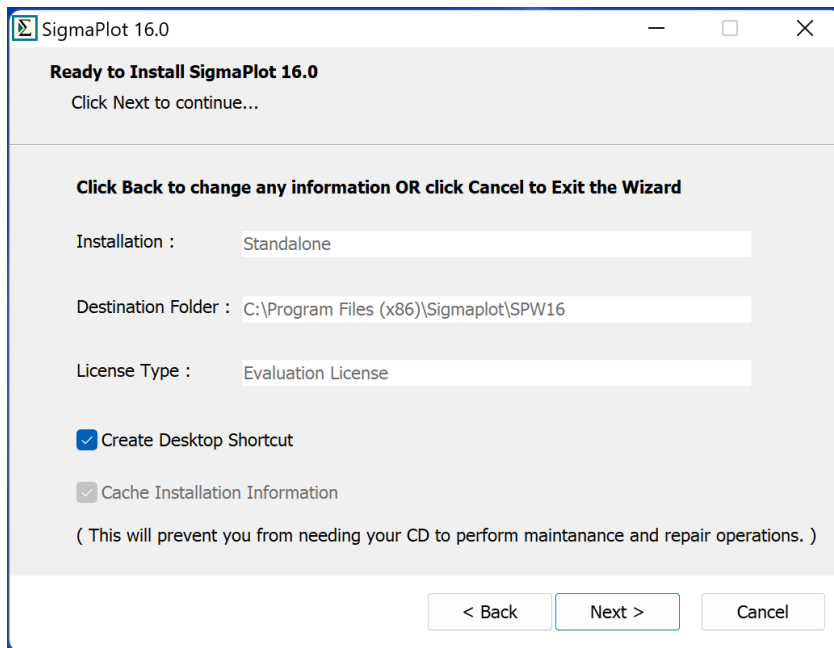
To continue the installation, press Next button:

This dialog shows the installable components with the required storage space in the hard drive.

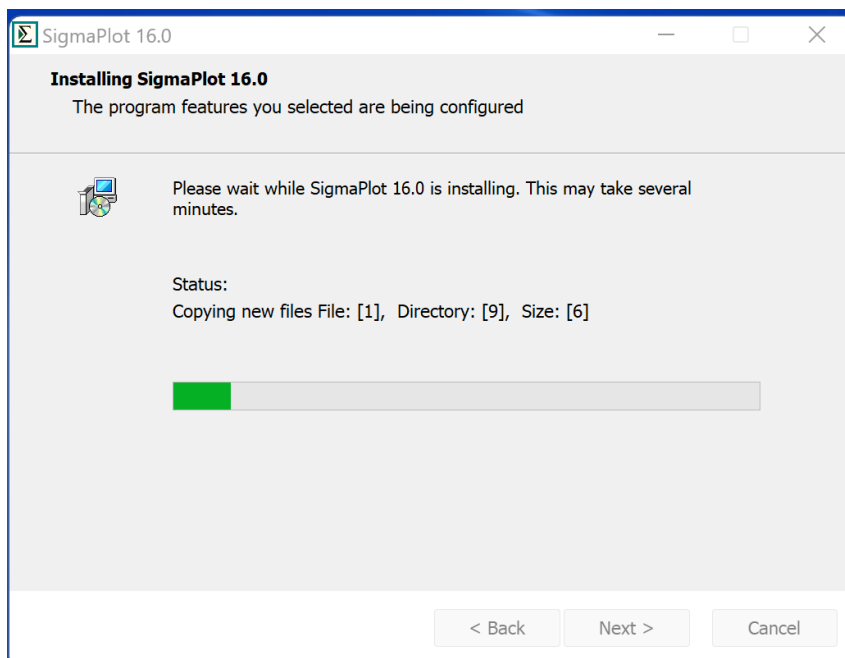


To continue the installation, press Next button:

There is no license key/file required at this point since SigmaPlot will be installed with a 30-day trial license which can be updated after the installation. Please check with the sales team/channel for the purchased license.



To continue the installation, press Next button:



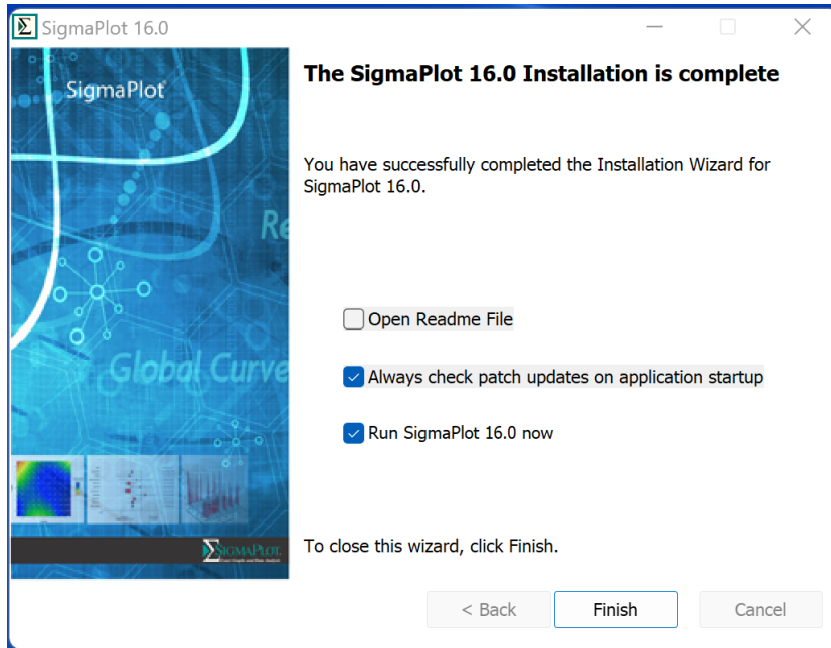
Progress windows/dialog(s) to proceed with the installation.

Select “Finish” button to complete the installation, here you have options to check/uncheck some checkboxes as

Open Readme File – Opens the readme.txt file after completion of installation.

Always check patch updates on application startup – This will help to update the application if any patch release for Sigmaplot 16.

Run Sigmaplot 16.0 now – Execute Sigmaplot after the completion of installation.

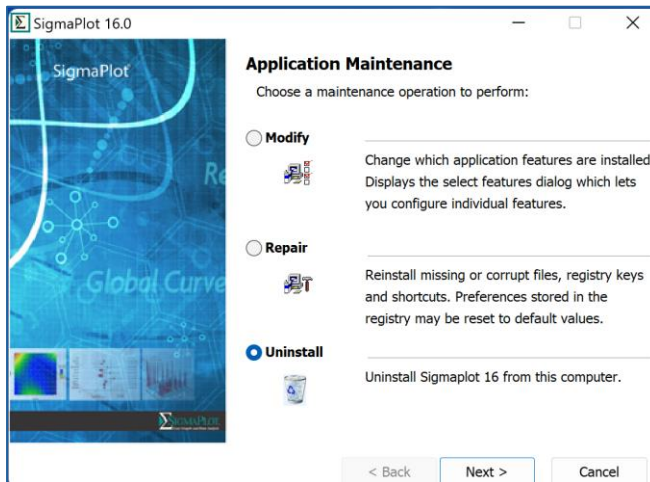


SigmaPlot 16 Uninstallation

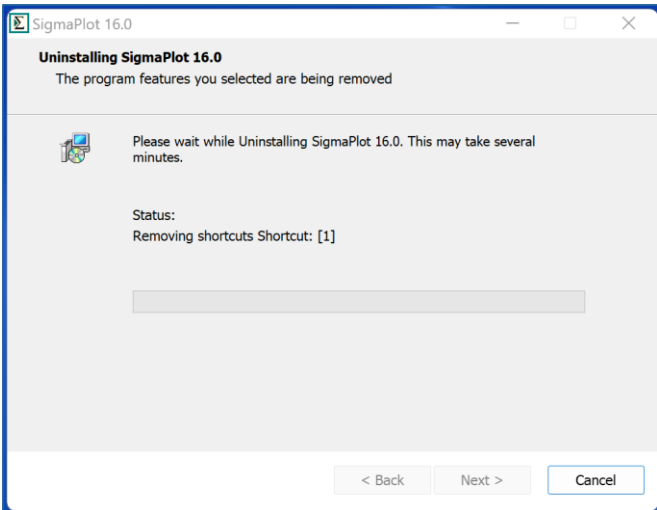
Uninstalling SigmaPlot requires going into “Add or Remove Programmes” under system settings. Select SigmaPlot 16 from the installed apps and click on “Uninstall”.



Select ‘Uninstall’ radio button for uninstallation. Other options could be selected based on the need.



To continue the uninstallation, press Next button:



Select "Finish" button to complete the uninstallation

