



SigmaPlot 16

Standalone/Single User

Licensing Guide

Ver 1.0

Standalone / Single User Licensing

By default, SigmaPlot 16 installation comes with a 30-day trial license. After 30 days trial, application will display a warning message to activate the license. License can be activated before the expiry of trial license as well, so that the supplied perpetual or annual license will get activated. Sales team will supply a product key file or V2C license based on the entitlement.

This document contains three sections for standalone license activation

1. Product key based license activation (After trial expiry or no license available)
2. V2C license file-based license activation (After trial expiry or no license available)
3. License Activation with active license (Trial – any license) available:

1. Product key based license activation:

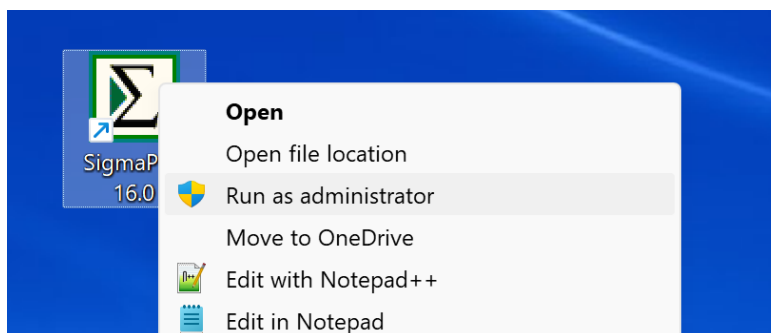
The product key is issued as a text file with the extension .txt. This file contains an alphanumeric code that needs to be copied.

Key Points to activate license using Product Key:

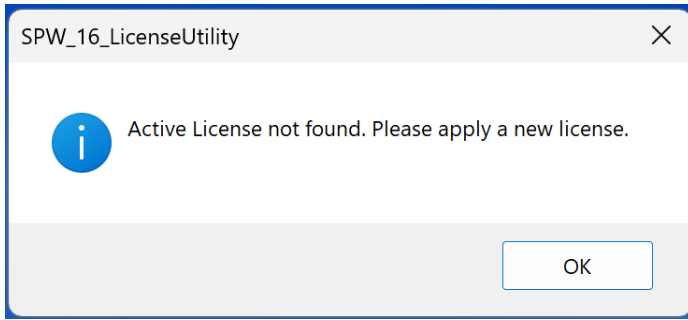
- User machine should have internet and access to our license activation server.
- Users need to make sure that there is no firewall or anti-virus restriction in that machine to access our server.
- Supplied product key can be activated only once; same key cannot be used to activate in multiple machines.
- If there is access restriction for SigmaPlot product to reach our server, user can follow license file (V2C) based activation, which does not require internet access but need additional steps to collect machine fingerprint to generate V2C file-based license for the user machine. (V2C file-based activation steps mentioned below).

Steps to activate the product key:

Right-click on the SigmaPlot icon on your desktop and select **Run as administrator** as shown below. You may need to enter an administrator username and password to run.

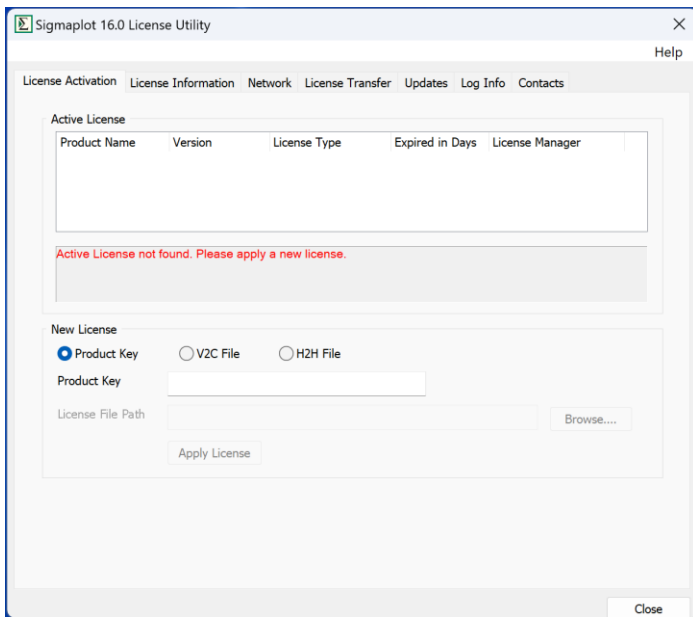


- If there is no license available, either 30-days license expired or not able to use the trial license on that machine. Active license not found for SigmaPlot dialog box will be shown. If a trial or any other license still available, then SigmaPlot would launch without the below dialog

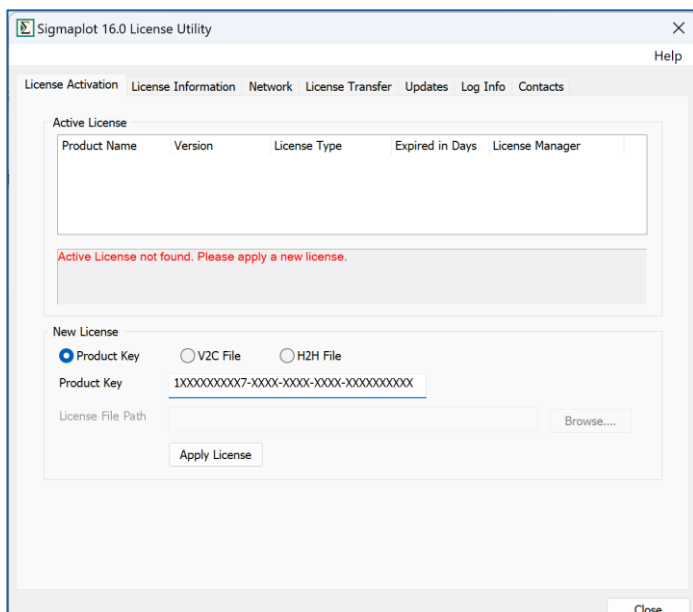


Click "OK" to continue license activation.

The SigmaPlot 16 License Utility dialog box appears



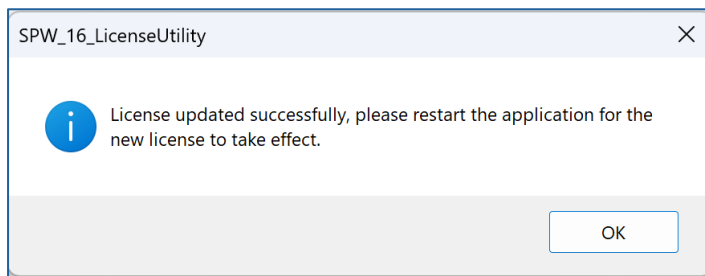
Select the 'License Activation' tab and then select 'Product Key' radio button in the 'New License'. Enter the alpha-numeric product key into the field and click Apply License button.



At this point license utility will attempt to connect internally (one time connection) to our following license server(s) to install the license: **inpixon.sentinelcloud.com**

PS: If required, please allow/whitelist it in your security/firewall to establish one time communication to our license server.

Once communication to our license server is established and license is installed. The SigmaPlot 16 License Utility dialog box appears to inform you that the license was updated successfully.



Click OK to launch SigmaPlot

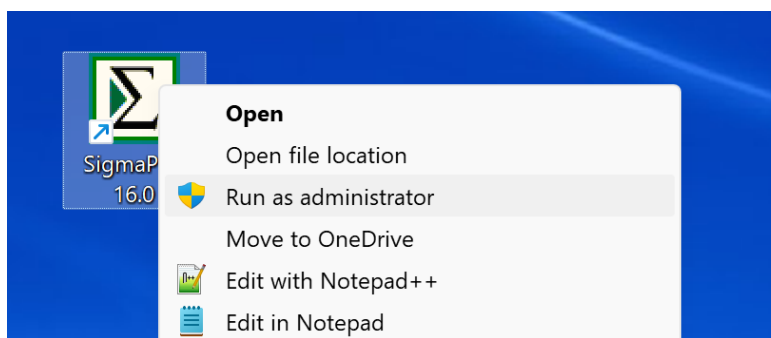
2. V2C file-based license activation:

Key Points to activate license using V2C file:

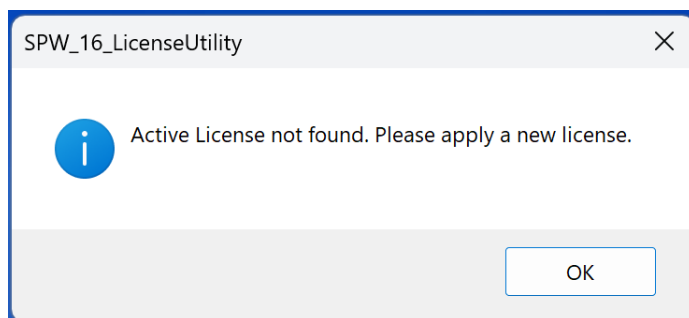
- V2C and C2V are file name extension of the license related files.
- User should collect and supply C2V file generated from the SigmaPlot installed machine to the sales channel.
- Logged in User account should have admin privilege to update the license.

Steps to activate thru V2C file:

Right-click on the SigmaPlot icon on your desktop and select **Run as administrator** as shown below. You may need to enter an administrator username and password to run.

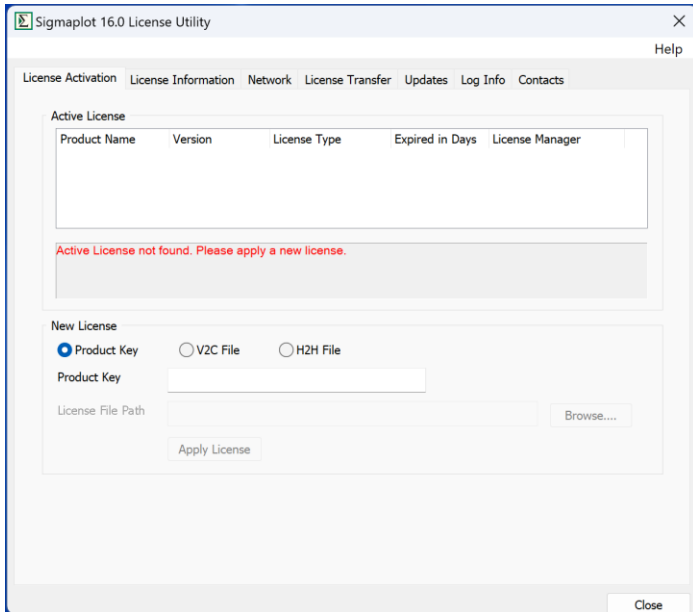


- If there is no license available, either 30-days license expired or not able to use the trial license on that machine. Active license not found for SigmaPlot dialog box will be shown. If a trial or any other license still available, then SigmaPlot would launch without the below dialog

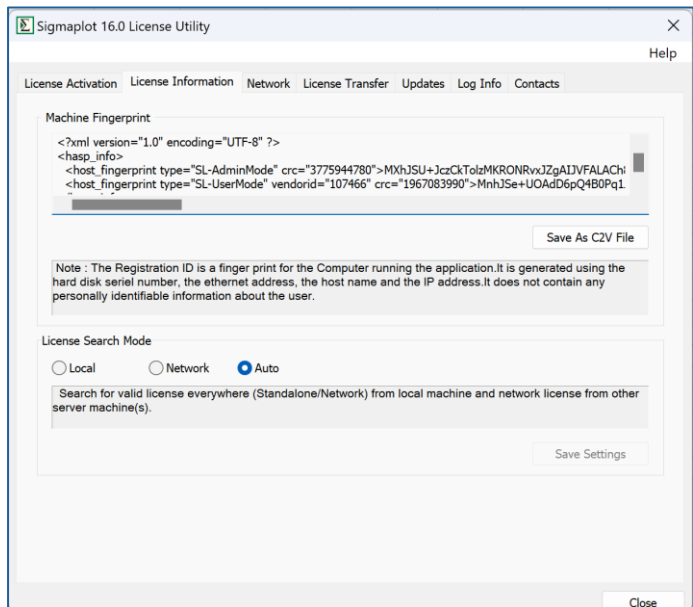


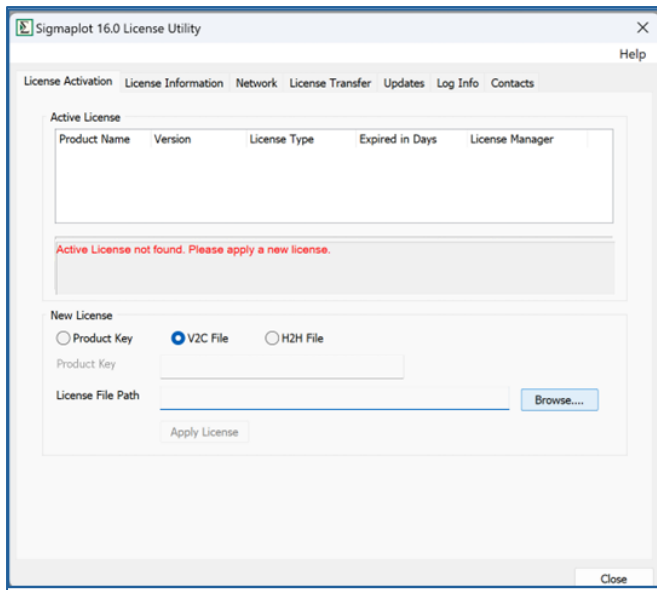
Click "OK" to continue license activation.

The SigmaPlot 16 License Utility dialog box appears



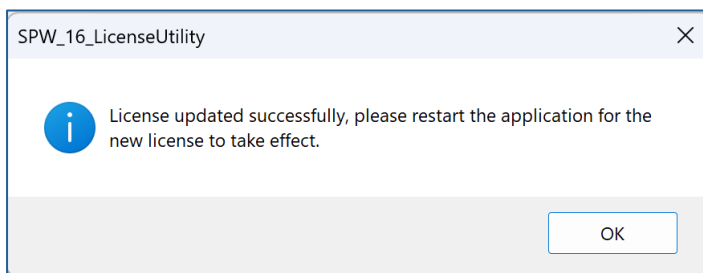
Step to collect C2V file: Select “License Information” tab in the license utility dialog and use the “Save As C2V file” button to save the machine fingerprint displayed in the dialog. This C2V file needs to be supplied to the Sales team/channel to collect the V2C file-based license.





Select the 'License Activation' tab and then select 'V2C File' radio button in the 'New License'. Pick the supplied V2C file using the "Browse" button and then click Apply License button.

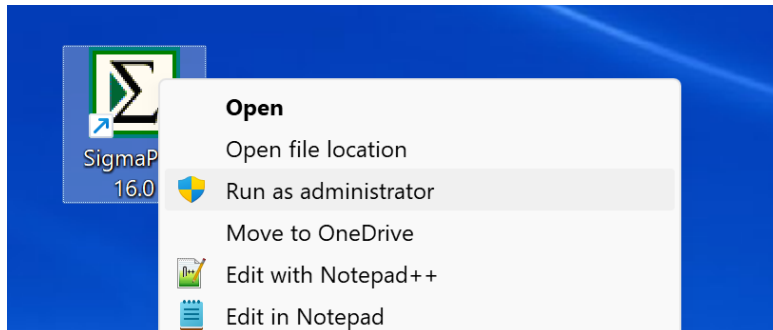
Once the license got activated. The SigmaPlot 16 License Utility dialog box appears to inform you that the license was updated successfully.



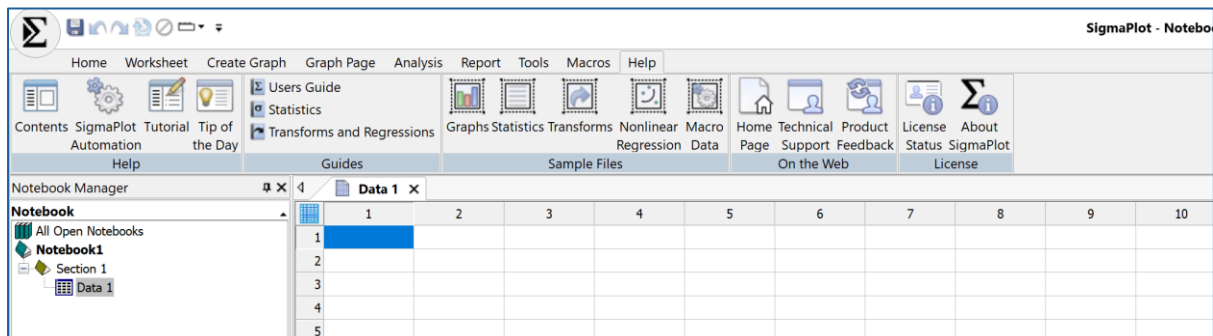
Click OK to launch SigmaPlot

3. License Activation with active license (Trial) available:

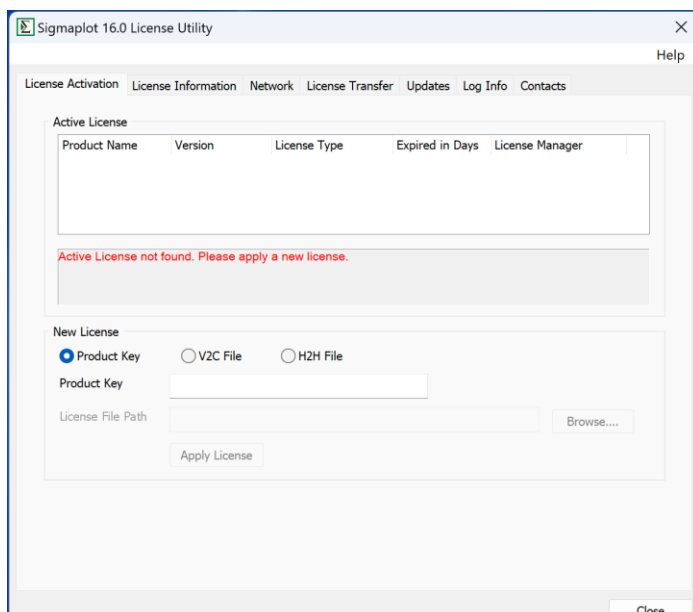
Right-click on the SigmaPlot icon on your desktop and select **Run as administrator** as shown below. You may need to enter an administrator username and password to run.



If a trial or any other license still available, then SigmaPlot would launch and application opens as shown below.



Click on the Help ribbon and License Status button to open **Sigmatplot 16 License utility** dialog and will display the available license (Trial).



Follow the same procedure mentioned above to activate Product Key or V2C file based license.