

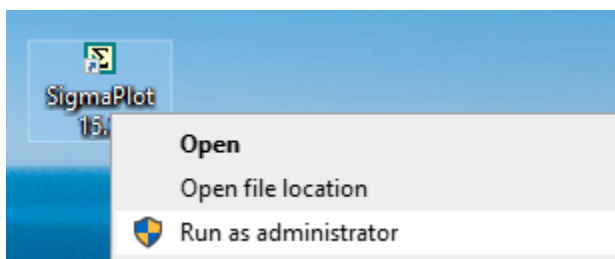
How to Update Your SigmaPlot License Using Product Key or a Site License File (*.v2c):

You can update your SigmaPlot License using a product key or a site license file (*.v2c).

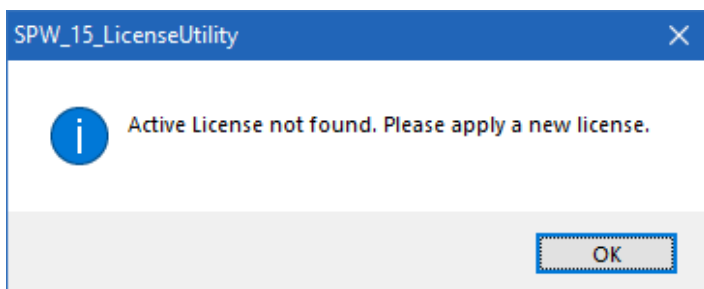
- Using a Product Key (online license installation)

If you have a **Product Key**, you must be connected to the Internet to install the license.

1. After installing, right-click on the SigmaPlot icon on your desktop and select **Run as administrator**



You may need to enter an administrator username and password to run. If there is no license available, then the **SPW_15_LicenseUtility** dialog box appears:

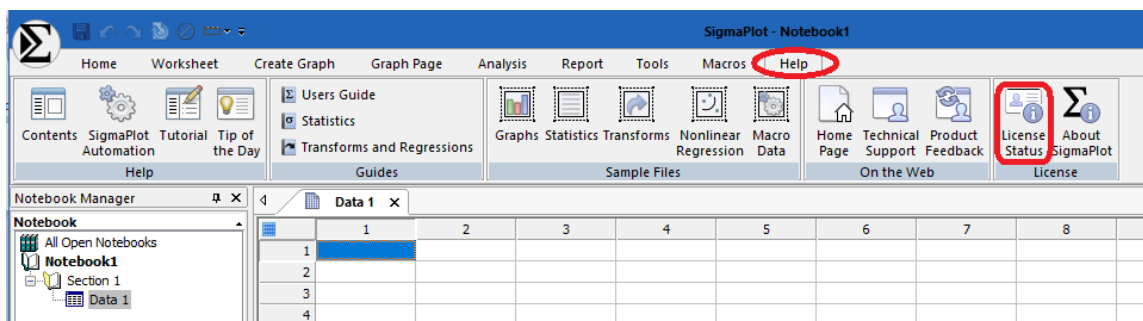


Click **OK**. And go to step 3.

If a trial or any other license still available then SigmaPlot would launch without the above dialog.

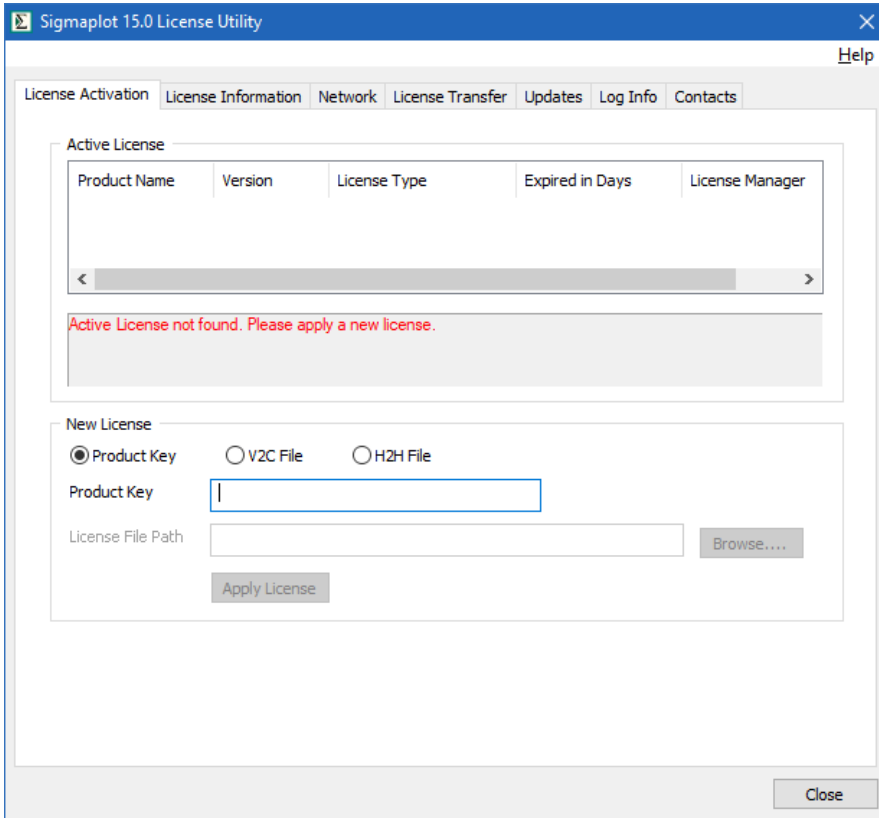
For network licenses, please contact your Systems Administrator.

2. After launching SigmaPlot, click the **Help** top tool bar menu then press **License Status** ribbon



The **SigmaPlot 15 License Utility** dialog box appears. In that case, either you have a product key or '*.v2c' license file.

3. Select the 'License Activation' tab under **New License**, group select **Product Key** radio button



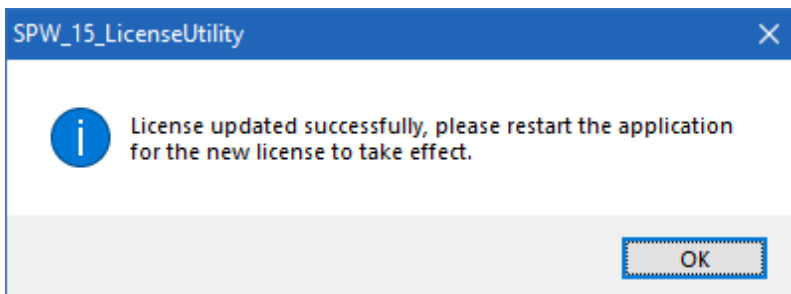
4. Enter the alpha-numeric product key into the field and click **Apply License**

At this point license utility will attempt to connect internally (one time connection) to our following license server(s) to install the license:

grafiti.sentinelcloud.com

PS: If required, please allow/white-list it in your security/firewall to establish one time communication to our license server

Once communication to our license server is established and license is installed. the **SigmaPlot 15 License Utility** dialog box appears to inform you that the license was updated successfully.

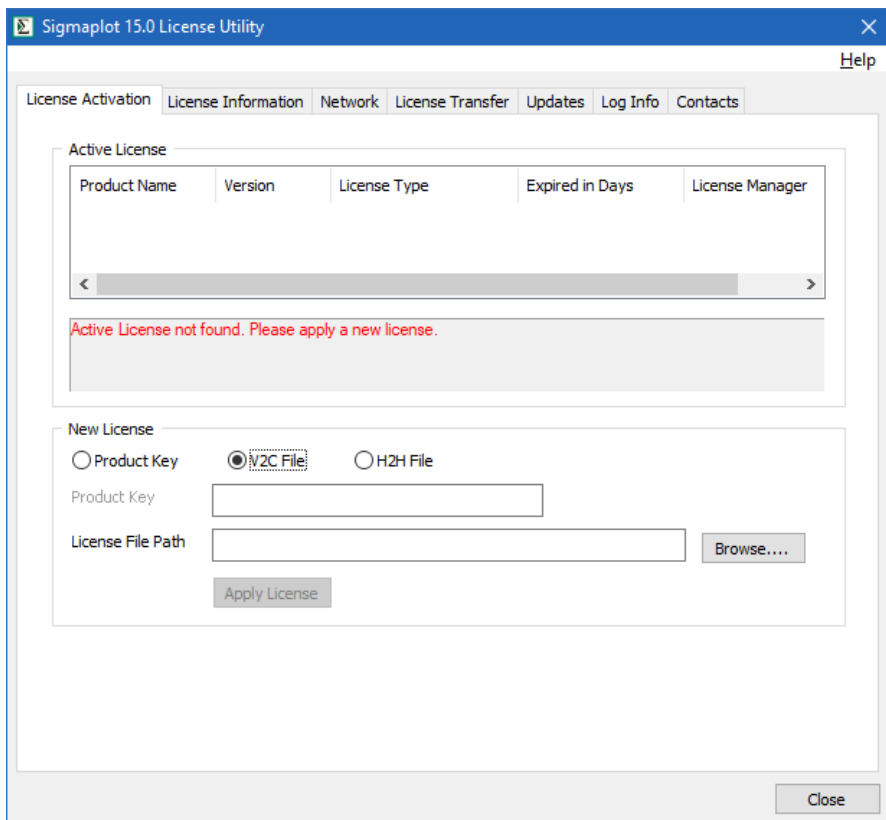


5. Click **OK** to launch SigmaPlot

• Installation Instructions For a *.v2c License File

Follow these instructions if you have received a (*.v2c) license file for a site or standalone installation:

1. In **SigmaPlot 15 License Utility** dialog box, click **Browse**
2. Press **Browse** button and then select the *.v2c license file which SigmaPlot sales team may have provided you, and click **Open**
3. Click **Apply License**
4. Click **OK**



You can repeat these steps to see the status of perpetual or time limited licenses.

Tip: You can run the **SigmaPlot 15 License Utility** by double-clicking **SPW_15_LicenseUtility.exe** from the SigmaPlot application directory (by default C:\Program Files (x86)\SigmaPlot\Spw15).



North America & South America
Grafiti LLC
405 Waverley St
Palo Alto, CA 94301
United States
saves.sales@grafiti.com

Germany, Austria, & Eastern Europe
Grafiti GmbH
Königsallee 92a
40212 Düsseldorf Germany
saveskontakt@grafiti.com

UK & Western Europe
Grafiti UK Ltd
268 Bath Road Slough, SL1 4DX
UK
saves.sales@grafiti.com